

F(D)(G)M40-55(C)NT



PRESENTED BY :

Internal Combustion Pneumatic Tire Forklift Trucks  
**4.0 – 5.5 TONS**



# COMFORT AND EFFICIENCY

Our TCM Forklift Trucks are crafted for an organised and clutter-free workspace, enhancing overall efficiency. With ergonomic controls, operator fatigue is minimised, leading to higher productivity and improved safety.

## SEAMLESS TRANSMISSION AND PRECISION HANDLING

Equipped with a 2-speed forward and 1-speed reverse automatic transmission, along with full hydrostatic steering and synchroniser, the F(D)(G)M40-55(C)NT series delivers exceptional manoeuvrability, even in the most confined areas.

## COMPREHENSIVE SAFETY CONTROLS

Our Integrated System for Safety automatically halts all operations and engages the electric parking brake when the operator vacates the seat, ensuring protection against accidental movements.

## AUTOMATIC FORK AND GEAR SECURITY

For enhanced safety, the fork automatically locks when the ignition is turned off, staying firmly in place even if accidentally bumped. Additionally, a neutral safety lock ensures the forklift truck cannot start if left in gear.

## WHISPER-QUIET AND FLUID PERFORMANCE

The 4.0 - 5.5 ton F(D)(G)M40-55(C)NT Forklift Trucks are designed with noise and vibration-dampening mounts on the full-floating powertrain that guarantee quieter and smoother operations.

## SOFT FORK DESCENT

This unique feature gently slows the forks as they near the ground, ensuring that valuable or delicate goods are safeguarded from harsh drops or impacts.

Note: only for simplex mast

# DRIVE PRODUCTIVITY WITH COMPREHENSIVE SOLUTIONS

Model	Fuel Type	Capacity (kg) @	
		500mm LC	600mm LC
FDM40NT	Diesel	4000	3500
FGM40NT	Gas / LP Gas	4000	3500
FDM45NT	Diesel	4500	4000
FGM45NT	Gas / LP Gas	4500	4000
FDM50CNT	Diesel	5000	4500
FGM50CNT	Gas / LP Gas	5000	4500
FDM50NT	Diesel	–	5000
FGM50NT	Gas / LP Gas	–	5000
FDM55NT	Diesel	–	5500
FGM55NT	Gas / LP Gas	–	5500

## CONVENIENT MAINTENANCE ACCESS

Maintenance is simplified with TCM Forklift Trucks, thanks to easily accessible engine covers and removable side panels. The tool-free design ensures that panel removal is quick and easy, allowing for hassle-free inspections and service.

## ENHANCED, LOW-MAINTENANCE BRAKING

Our advanced braking system is designed to minimise maintenance needs, eliminating the requirement for hub and drum removals, thereby significantly cutting down on service time and costs.





# INCREASED EFFICIENCY

Achieve maximum efficiency with a forklift truck engineered with all the critical features needed to simplify and enhance your operations.

## DURABLE MAST WITH SUPERIOR VISIBILITY

The F(D)(G)M40-55(C)NT series features a newly crafted steel mast that resists both twisting and bending. With narrow flanges and tapered fork bars, operators gain a clearer line of sight, while the optimised mast design and smart placement of cylinders and chains further enhance visibility.

## PROLONGED SERVICE INTERVALS\*

With extended engine oil change intervals now reaching 500 hours, up from 200 hours, your operations can enjoy increased uptime and reduced maintenance expenses.

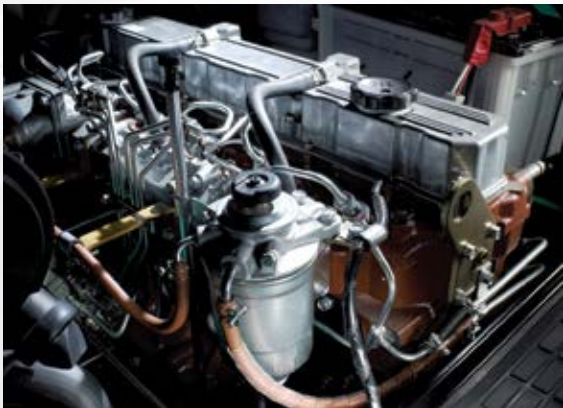
Note: \*For diesel trucks

### Oil Change Intervals

Referenced to the recommended engine oil for F(D)(G)M40-55(C)NT Forklift Trucks:

- Conventional Vehicle: 200 hours
- F(D)(G)M40-55(C)NT: 500 hours\*

\*Note: Dependent on diesel quality and sulfur content.



## HIGH-PERFORMANCE, ECO-FRIENDLY ENGINES

Powered by the efficient S6S diesel engine and the electronically controlled GK45 gasoline engine, these engines meet stringent global emissions standards while delivering uncompromising power and efficiency.

## ENERGY EFFICIENCY AND EMISSION REDUCTION

The "Power / Soft Mode Switch" on our gasoline models lets you easily shift between power and eco modes, with the eco mode reducing CO<sub>2</sub> emissions by 13%.

## STURDY, BALANCED CONSTRUCTION

These 4.0 - 5.5 ton forklifts are engineered with a reinforced frame and a low center of gravity, providing increased stability and performance, especially when handling heavy loads.

## VEHICLE INFORMATION

Elevate safety and performance with our advanced digital display. Our advanced digital display offers precise, easy-to-read data on speed, load capacity, and essential operational metrics. The strategically positioned, bright LCD monitor provides instant insights into engine health, system diagnostics, and forklift truck activities.



# DEDICATED SUPPORT



# FROM EXPERIENCED PROFESSIONALS

## EXPERT SUPPORT FROM SKILLED PROFESSIONALS

TCM Forklift Truck dealers are renowned for delivering exceptional customer service, guiding you through every phase of your ownership experience. When you invest in a TCM Forklift Truck, you'll receive:

- Genuine TCM Forklift Truck parts
- Thorough Planned Maintenance services
- Access to a range of rental options
- Dealers conveniently located for your ease

## SCHEDULED MAINTENANCE FOR OPTIMAL PERFORMANCE

**Routine maintenance is essential** to keep your vehicle performing at its best and to extend its operational life. TCM Forklift Trucks are supported by planned maintenance programs, provided by experienced dealers dedicated to ensuring your forklift operates without a hitch. By scheduling maintenance in advance, you can avoid unplanned interruptions, seamlessly integrating upkeep into your regular operations. TCM's trained technicians expertly manage all maintenance activities, including fluid and lubricant checks, and proactively address any potential issues to prevent them from developing into major problems.

## TCM CARE PROGRAM (OPTIONAL)

**TCM Forklift Trucks** – come with one of the most comprehensive powertrain warranties available in the industry. By choosing the TCM Care Program for your new F(D)(G)M40-55(C)NT Forklift Truck, you're ensuring long-lasting protection. Should there be any issues with your powertrain components, it will be replaced with genuine parts, offering you a simple and dependable solution.

This coverage plan safeguards your investment for up to 3 years or 5,000 hours, whichever comes first. In the unlikely event of a powertrain malfunction, you can rest assured knowing that we've got you fully supported.



SPECIFICATION

CHARACTERISTICS					DIESEL ENGINE TRUCK								GASOLINE ENGINE TRUCK												
1.1	Type of Truck					FDM40NT		FDM45NT		FDM50CNT		FDM50NT	FDM55NT	FGM40NT		FGM45NT		FGM50CNT		FGM50NT	FGM55NT				
1.3	Load capacity			kg		3500	4000	4000	4500	4500	5000	5000	5500	3500	4000	4000	4500	4500	5000	5000	5500				
1.4	Load Center			mm		600	500	600	500	600	500	600		600	500	600	500	600	500	600					
PERFORMANCE																									
2.1	Maximum Fork Height			mm	A	3350					3360			3350					3360						
2.2	Free Fork Height			mm	B	150					160			150					160						
2.3	Speeds	Lifting	Loaded	mm/s		550			470			570			490										
			Unloaded	mm/s	610			530			600			520											
		Lowering	Loaded	mm/s	500																				
			Unloaded	mm/s	500																				
2.4	Tilt	Mast	Forward	deg	6																				
			Backward	deg	12																				
2.5	Speeds	Traveling	Loaded	km/h	21.5			21.0					22.0					21.5							
			Unloaded	km/h	22.0								22.5												
2.6	Maximum Drawbar Pull	Stall	Loaded	N	37500		36500		37000				38500		37500										
2.7	Drawbar Pull	1.6km/h	Loaded	N	27000				26500				26000		28000			27500				27000			
2.8	Maximum Gradeability	Stationary on slope	Loaded	%	44.9	42.5	39.4	37.4	35.5	33.9	32.3	30.1	45.8	43.3	40.2	38.1	36.2	34.6	33.0	30.7					
2.9	Gradeability	at 1.6km/h	Loaded	%	31.1	29.1	28.0	26.4	25.0	23.8	22.6	20.8	32.0	30.1	28.9	27.2	25.9	24.5	23.3	21.5					
2.10	Turning Radius			mm	C	2580		2730		2760		2890		2940		2580		2730		2760		2890		2940	
2.11	Practical Intersecting Aisle Width	Single	with 1220mm forks	mm		2320		2395		2415		2470		2495		2320		2395		2415		2470		2495	
2.12	Practical Aisle for Right Angle Stacking			mm		4370		4530		4560		4710		4760		4370		4530		4560		4710		4760	
DIMENSIONS																									
3.1	Overall Length to Fork Face			mm	D	3000		3130		3170		3310		3360		3000		3130		3170		3310		3360	
3.2	Width	with Standard Tires		mm	E	1415		1460						1415		1460									
		with Normal duals (Optional)		mm		1780																			
		with Special Duals (Optional)		mm		1965																			
3.3	Height	with Lowered Mast		mm	F	2320				2400				2320				2400							
		with Extended Mast (with Backrest)		mm	G	4570						4590				4570				4590					
		to Top of Overhead Guard		mm	H	2250																			
3.4	Forks (Thickness x Width x Length)			mm		50x150x1220					60x150x1220			50x150x1220					60x150x1220						
3.5	Forks Spread (Out-to-Out Minimum / Maximum)			mm	J	300-1190																			
3.6	Front Overhang (Center of Front Axle to Fork Face)			mm	K	577				582		602			577			582		602					
3.7	Wheelbase			mm	L	1850		2000				2150			1850		2000				2150				
3.8	Thread Width	Front, standard tires		mm	M	1175																			
		Front, Normal duals (optional)		mm		1310																			
		Front, special duals (optional)		mm		1445																			
		Rear Tires		mm	N	1180																			
3.9	Ground Clearance	at Lowest point outer mast		mm		150																			
		at Center of Wheelbase		mm		227																			
3.10	Tire size	Size Front, Standard				8.25-15-14-PR		300-15-18PR						8.25-15-14PR		300-15-18PR									
		Size Front, Normal dual (Optional)				7.50-16-12PR						NA		7.50-16-12PR						NA					
		Size Front, special dual (Optional)				8.25-15-12PR																			
		Rear Tires				7.00-12-12PR						7.00-12-14PR		7.00-12-12PR								7.00-12-14PR			
WEIGHT																									
4.1	Machine Weight	Powershift (standard) Tires		kg		5920		6330		6850		7300		7640		5860		6270		6780		7240		7570	
		Powershift (optional dual) Tires		kg		6050		6420		6930		7390		7720		5980		6350		6870		7320		7660	
		Powershift (special dual) Tires		kg		6120		6490		7000		7460		7790		6060		6430		6940		7400		7730	
BRAKE																									
5.1	Service Brake Type					Hydraulic																			
5.2	Parking Brake Type					Hydraulic																			
POWERTRAIN																									
6.1	Engine	Model				S6S								GK45											
		Max. Rated Power / rpm to DIN 70020		Kw/rpm		57.5 / 2300								63.9 / 2450											
		Max. Rated Torque / rpm to DIN 70020		Nm/pm		260 / 1700								265 / 1600											
		Displacement		cc		4996								4452											
		Fuel Tank Capacity		L		87		105						87		105									
6.2	Transmission		Type				ATM (TORQUE CONVERTER)																		
6.3	Number of Speed	Forward				2																			
6.4		Backward				1																			
6.5	Relief Pressure		For Attachments		Mpa		19.1																		